

A solid yellow vertical bar is positioned to the left of the main title text.

vision & precision

Binder Parametric Metal – decorative metal surfaces
and 3D facade elements for architecture.



Binder Parametric Metal

3D customization – parametric architecture transferred to facades

Binder Parametric Metal GmbH specialises in the implementation of individual 3D facades and interior decorations made from three-dimensionally formed sheet metal.

Since 1952, the metal goods factory Reichertshofen Karl Binder GmbH has focussed on the individual features of a product with the development of the Binder sidecar for DKW motorbikes. Binder Parametric Metal GmbH also evolved from the different ventures of the Binder family, which operate in the automotive, aviation and power plant technology sectors.

Technology

Binder Parametric Metal uses among other things a special fluid forming process for metallic materials that originated from the aviation industry. Binder Parametric Metal GmbH creates sophisticated architectural facades and building envelopes which are akin to 3D works of art.

Our in-depth engineering knowledge and specific technological know-how in the field of forming metal plates create unique solutions for the buildings of today. In the course of the 3D forming, we give surfaces and textures new architectural characteristics.

production



A glimpse into the production of our facade solutions

Regardless of whether we are talking about new constructions, restoration, industrial buildings or urban renewal – our products made from shaped materials enable the individual design of 3D facades and interiors.

From classic elegant, puristic–simple to imaginative, unusual ideas – we offer almost limitless possibilities in the area of facade and interior design.

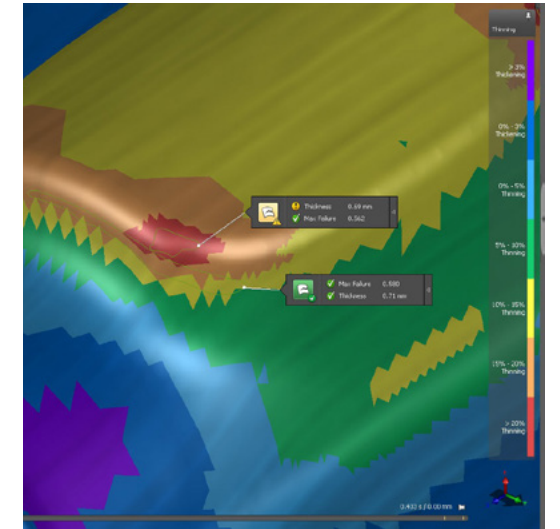
We focus on visible, unique accents, and in doing so we place importance on close collaboration with our customers and associated architects and planners in every project stage – from the initial planning stage through to implementation.



Feasibility analysis

Based on your and our design proposals, new forms emerge for which the feasibility is determined using professional software at our company. We look at the relevant materials and then check the technical practicability of the project. The software determines to what extent the idea is within the bounds of feasibility. Of course, many designs can be implemented in a continuous longitudinal or transverse layout.

This produces well-founded data that can be transferred into results by renderings. They serve both as solid decision basis for architects and developers as well as for specialist planners for practical work, for example for the facade section or sample production.



Mounting solutions

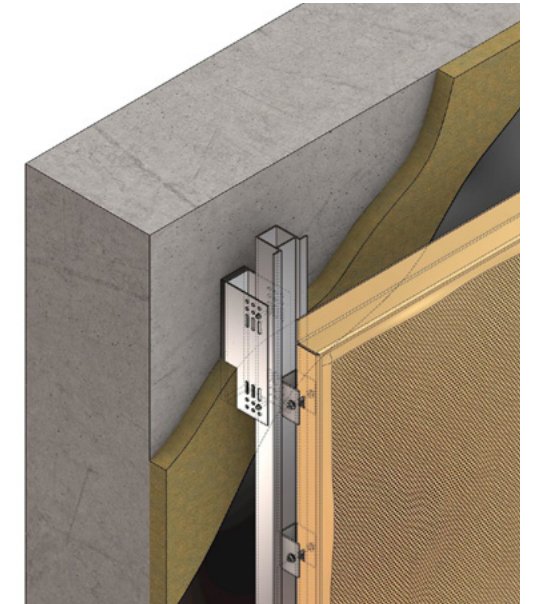
Visible mounting

With visible mounting, the facade elements are customised at the factory and provided with the corresponding fixing holes. The unfolded elements are attached on the construction site with screws or rivets in accordance with the specialist planners' specifications.

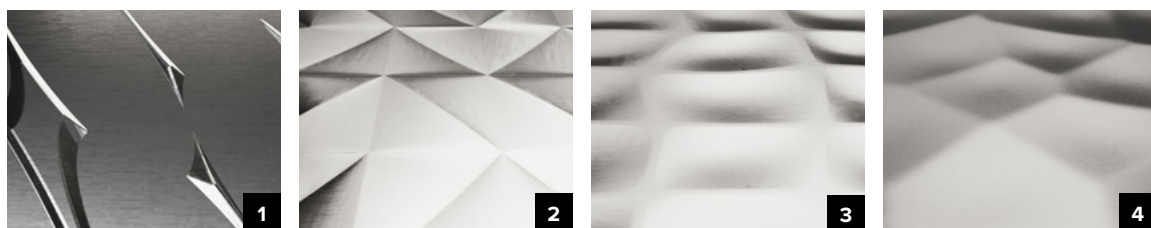
In terms of a supporting structure, we recommend in this case an aluminium standard facade subconstruction with support profiles made of L-angles.

Non-visible mounting

The facade elements can also be mounted invisibly. In this case, the elements are folded on two or four sides or shaped like a cassette. They are then attached on the construction site by, for example, hanging them in a supporting structure to be defined by the customer.



product



3D metal facades are used in new buildings and renovations, in residential, office and industrial properties, both inside and outside on walls and ceilings. Individual 3D metal panels form an appealing architectural cladding and ensure sustainability and convenience. Being a complete and permanent cover, the metal facade protects against damage and the effects of weather. This demonstrably regulates and improves energy efficiency. When selecting the base structure and the insulation level, the use of 3D metal facades offers you absolute freedom.

The 3D metal panels from Binder Parametric Metal in various shapes, surfaces and colours open up artistic design freedom for individual facades. We manufacture our products from aluminium, stainless steel, copper, brass and many other metals and alloys. You are free to choose the surface treatment such as matting, polishing, brushing, anodisation or powder coating.

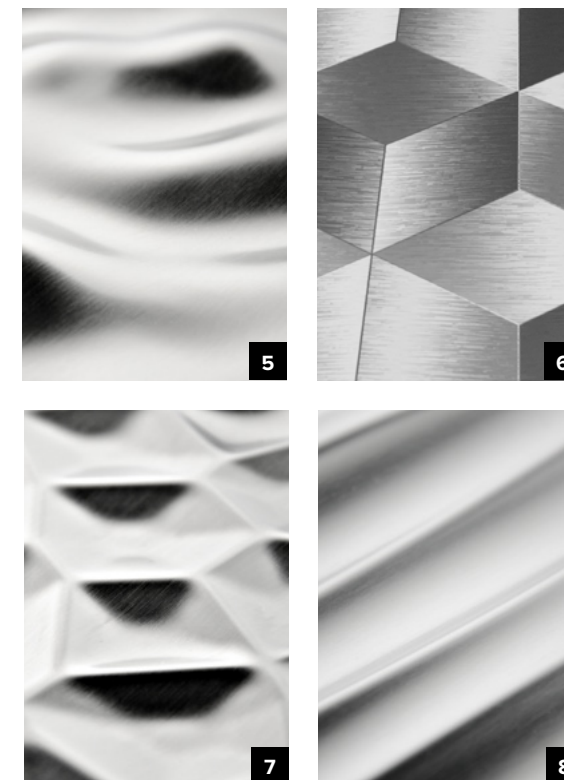
The benefits we offer

_Metal facades with perforated metal panels can be used in many areas as heat and sun protection

_Perforated metal panels offer a high degree of sound insulation

_Unique dynamic shaping creates enormous impact resistance and rigidity

_Corrosion-proof and corrosion-free materials ensure long durability and low maintenance/cleaning costs



- 1 Ridges
- 3 Rolling squares
- 5 Hillyland
- 7 Polygon
- 2 Unfolded
- 4 Punchy Polygon
- 6 Cube
- 8 Wave

External facade

Back-ventilated metal facades meet the highest standards when it comes to statics, fire protection, sound insulation and thermal insulation. They also represent a visual enhancement in terms of the design of building envelopes.

In addition, they are ideal for high-rise buildings exposed to high wind pressure and for buildings with special fire protection requirements. Back-ventilated metal facades make a significant contribution to energy savings and to climate protection. They can be used in situations where simpler facade insulations are no longer feasible.

Interior design

Thanks to relevant opportunities for sound control and for visual interior design, ceiling cladding fulfils an important function in living rooms, shopping centres, office buildings, departure lounges and airports.

In addition to the visual enhancement, 3D-shaped interior wall cladding also offers insulation and acoustic benefits. It contributes to fire protection and, depending on the type of use, offers different ways of completely redesigning rooms.

Surfaces

Standard anodisation:

Neutral

EV1

Gold

G1A

EV3

Bronze

C31

C33

C35

EV2

C32

C34

Other surfaces:

_Polishing

_Brushing

_Etching

_Powder coating, RAL and other colour palettes

_Matting

_Bronzing

_Specially anodized

innovation lab

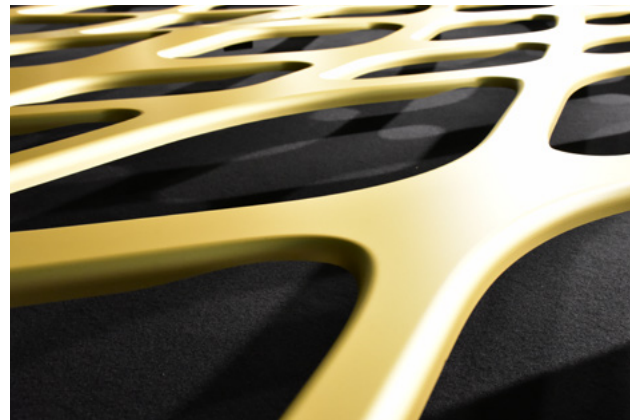


Innovation lab – from the initial idea to implementation

Ongoing progress is what characterises a company. Years of experience have shown that reliability, innovation, and continuity in research are just as important as continuous adaptation to changing conditions. For us, this means that we are constantly investigating new product solutions and materials for you. By doing so, we can always offer you new and outstanding architectural solutions.

Form is defined, feasibility is given – our Innovation Lab takes up your plans and quickly develops customer-oriented solutions. The aim is to pursue innovation in the field of 3D metal facades and to introduce the latter as a product.

For this we offer you a team of experts that evaluates, checks and designs your concepts and directly implements your ideas.



customized

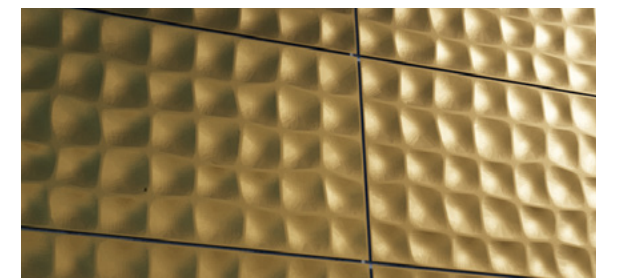
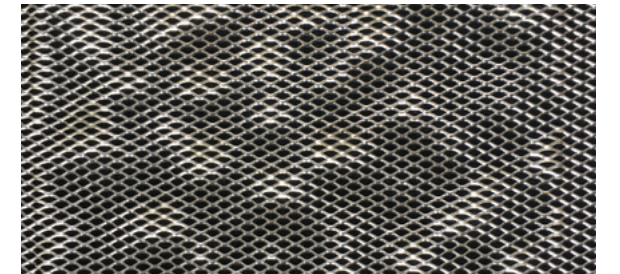
Our technical know-how allows us to produce perfect solutions for your construction projects. We support you with developing your individual designs based on your ideas. In order to guarantee professional implementation, we check in detail the feasibility and the materials to be used.

Our first priority is quality and appropriate compliance with the provisions in force. We attach a great deal of importance to the sustainability of our products.

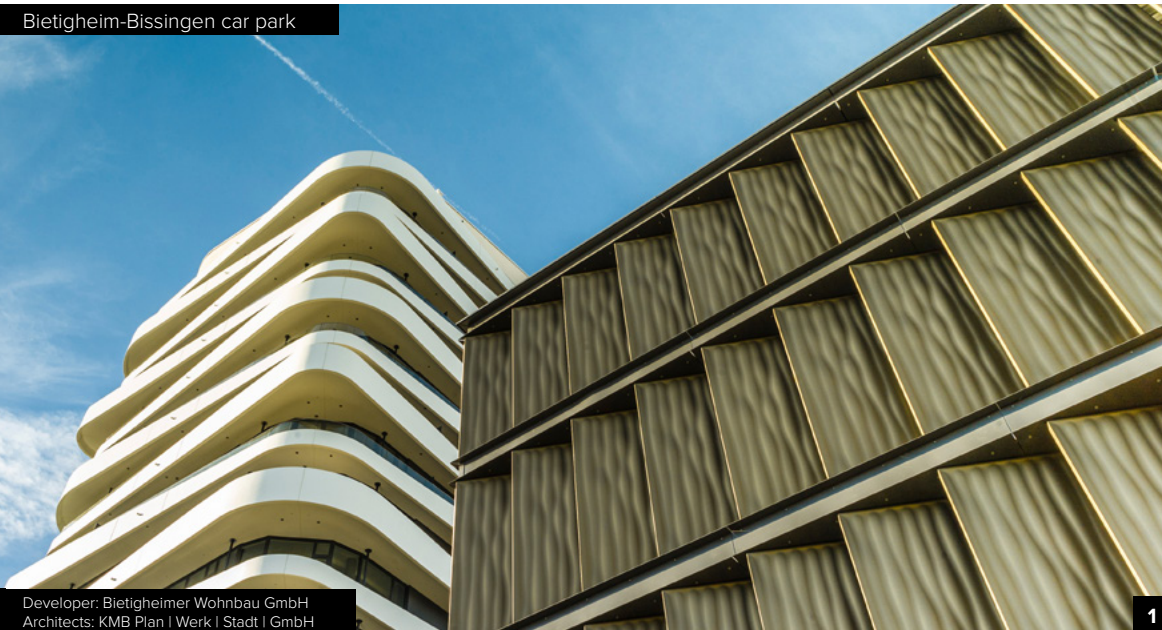
From a creative perspective, there are almost no limits in terms of what architects, developers and planners desire. We can manufacture and supply formats in a wide variety of dimensions.

With our broad range of robust metals, we can effortlessly implement your personal ideas. Rarely has it been easier to create the desired atmosphere for living and working.

You want to create visible, individual accents and have concrete suggestions? With us you'll find individual, uncompromising solutions for facade ideas based exactly on the architect's design.



refer ences



1 The envelope of the Bietigheim-Bissingen car park was manufactured using modern production processes. The facade panels are edged on all four sides. The solid undulating aluminium sheets are anodised in a bronze tone and mounted vertically as standing slats in the facade.

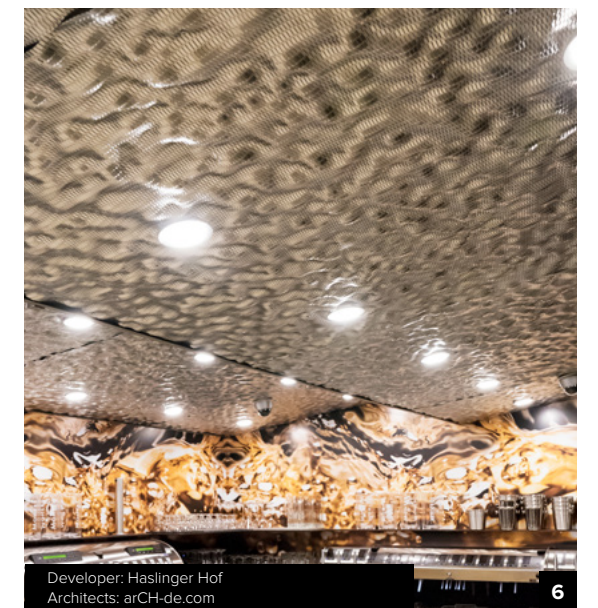
Solid aluminium sheet | Elox, C32 | Wave

2 Here, a facade that looks closed from the outside was created which has a very high degree of transparency. The design, seemingly opaque from the outside, easily allows you to look from the inside to the outside. At the same time, the ingenious facade allows the necessary ventilation. A gold-coloured anodised aluminium perforated sheet and an undulation running horizontally allows a concept to be realised that it both optically attractive and multifunctional. The horizontal facade elements were canted longitudinally and mounted so as not to be visible.

Aluminium perforated sheet, Rv 4-6 mm | Elox, gold tone | Wave

3 Thanks to state-of-the-art processes, we were able to design the envelope of the car park in Berlin exactly in accordance with the concepts of the developer. The gold-coloured, anodized and undulating aluminium perforated sheets are edged longitudinally and mounted as standing slats in the facade.

Aluminium perforated sheet, Rv 4-6mm | Elox, gold colour | Wave



4 The architectural task here was to combine a facade with a closed effect from the outside with the building envelope being as transparent as possible from the inside to the outside. At the same time, the facade should ensure adequate ventilation. With a gold-coloured anodised aluminium perforated sheet and an undulation running horizontally, a closed yet ventilated facade was created. The facade elements running horizontally were edged longitudinally and fitted so as not to be visible.

Aluminium perforated sheet, Rv 4-6mm | Elox, gold coloured | Wave

5 Architecturally challenging, three-dimensionally shaped sun protection that further continues in its form in the balcony railing located underneath. With an undulation specially designed for this project, the creative thoughts of the architect were implemented with a perforated and polished stainless steel sheet. The vertically installed sun protection panels together with the balcony railing produce a harmonic shape and were secured on a special subconstruction.

Stainless steel perforated sheet Rv 5-10mm | Polished | Wave

6 The bar and corridor area of the Haslinger Hof has been fitted with an innovative ceiling cladding. In order to generate special light reflections at the client's request, a formed expanded metal was mounted invisibly.

Aluminium-formed expanded metal | Hillyland

Binder Parametric Metal GmbH

Münchener Straße 45
85123 Karlskron-Brautlach
Germany

T +49 8450 9269 400
www.binderpm.de/en
info@binderpm.de

